

Font installation

Windows

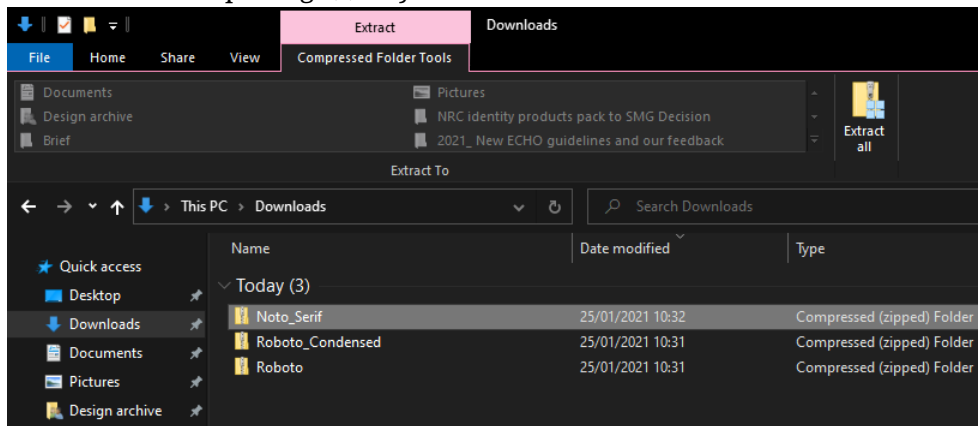
1. Download the font packages (.zip folders) for Noto Serif, Roboto and Roboto Condensed here:

<https://fonts.google.com/specimen/Noto+Serif>

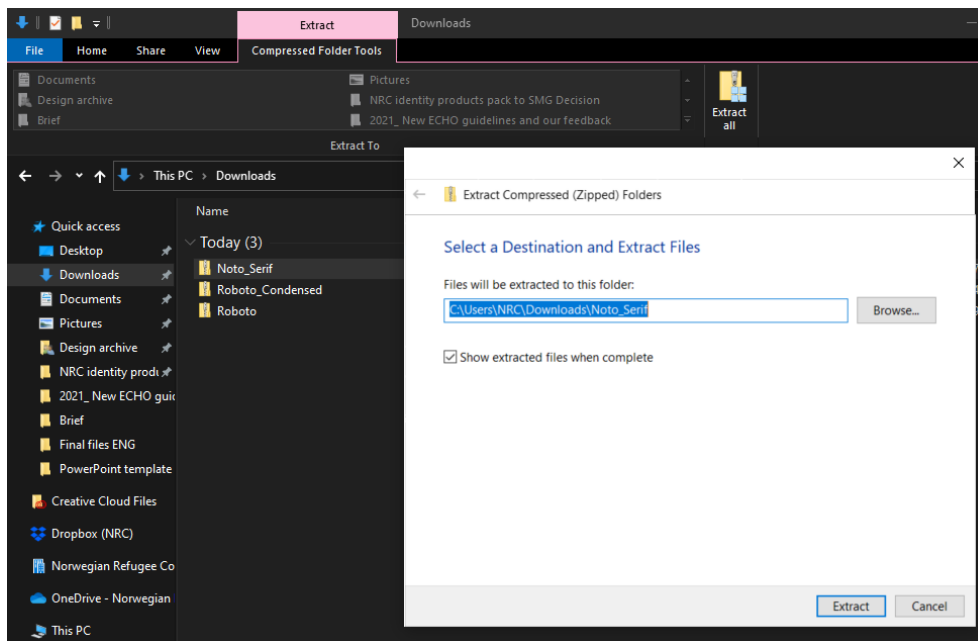
<https://fonts.google.com/specimen/Roboto>

<https://fonts.google.com/specimen/Roboto+Condensed>

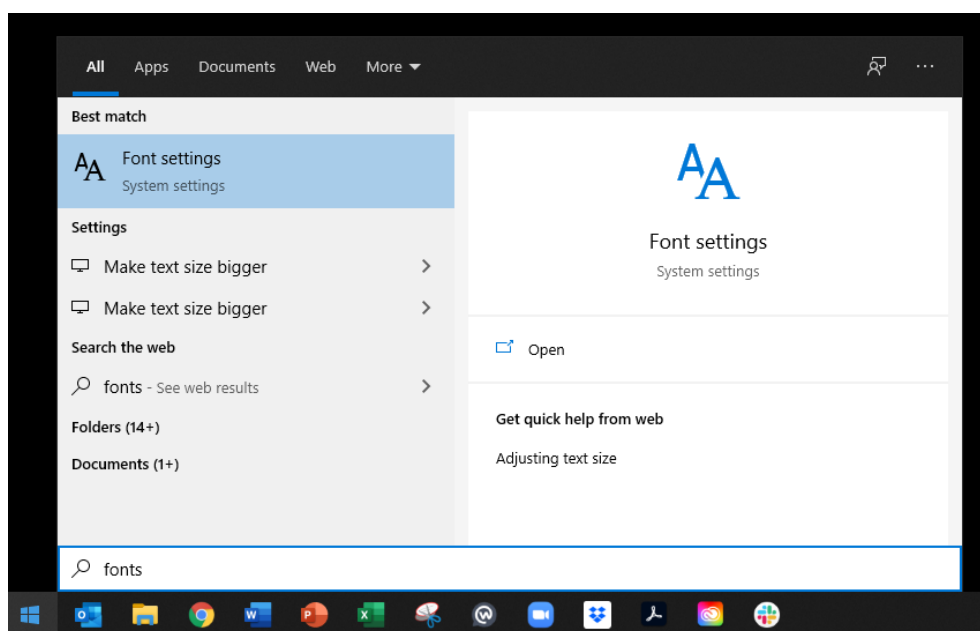
You will find the package(s) in your Downloads folder:



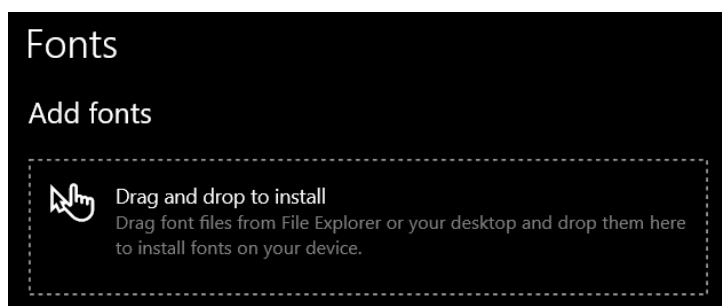
2. Decompress the package(s) by selecting “Extract all” and follow the instructions. This must be done for each package.



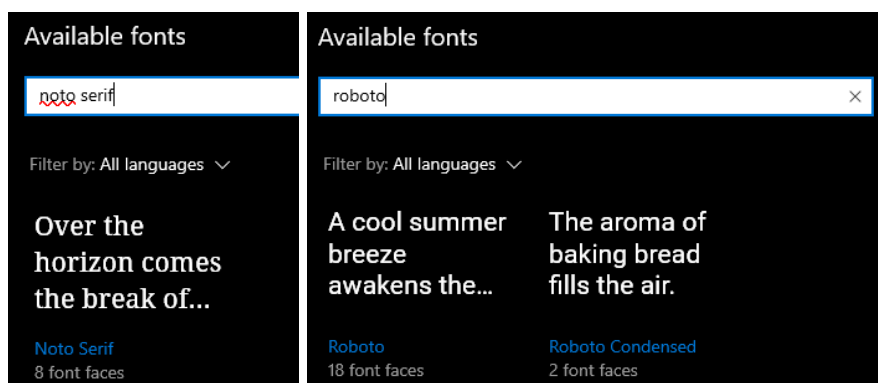
3. Search for “fonts” in the Start Menu or go to Start → Control Panel → Appearance and Personalisation → Fonts.



4. Select all font files and drag them into the Fonts window (i.e. the stippled box “Drag and drop to install”). Do not include the text document “License” as it won’t allow the drag and drop function.



5. Your installed fonts should now be activated. If in doubt, you can search for the fonts and they will appear like this when correctly installed:



Quit and reopen Word if you had this program open during installation.

macOS

1. Download the font packages (.zip folders) for Noto Serif, Roboto and Roboto Condensed here:
<https://fonts.google.com/specimen/Noto+Serif>
<https://fonts.google.com/specimen/Roboto>
<https://fonts.google.com/specimen/Roboto+Condensed>
2. Find the package(s) in your Downloads folder. Double click on the package(s) to decompress it.
3. Open Font Book (Go to Finder → Applications → Font Book).
4. Select all of the font files and drag them to the Font column (i.e., the second column) of Font Book. Do not include the text document “License”.
5. Your installed fonts should now be activated. Quit and reopen Word if you had this program open during installation.